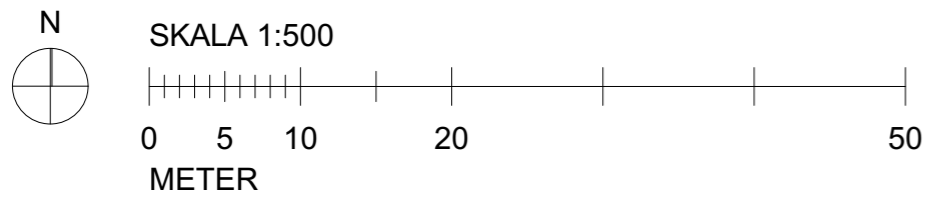


Situationsplan 1:500





Plan 2, Vån 1 tr
1:200

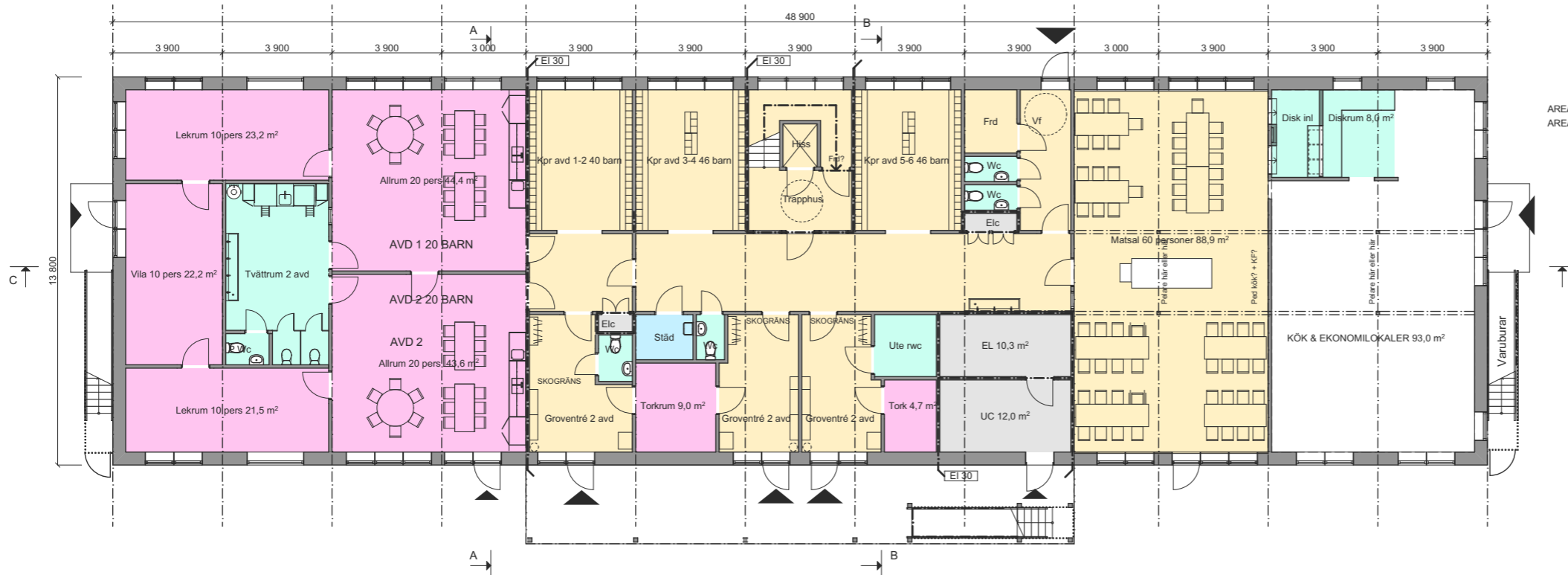
AREA BTA 674,8 m²
AREA BRA 618,0 m²

Preliminära siffror och areor
Förskola, 6 avd, 130 barn + ca 23? personal

HUVUDBYGGNAD

	BTA	BRA
Plan 1	675	618
Plan 2	675	618
Plan 1-2	1350	1236
Plan 3	68	62
Plan 1-3	1418	1298

Kök o matsal 182
Plan 1&2 exkl kök o matsal 1054
1054/130= 8,1 kvm / barn

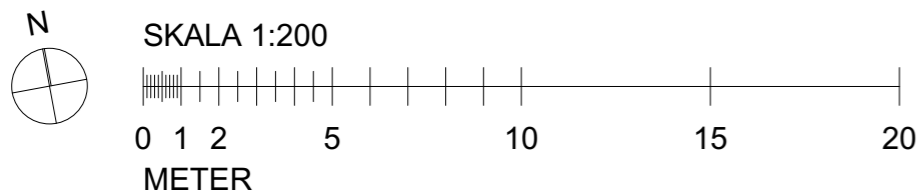


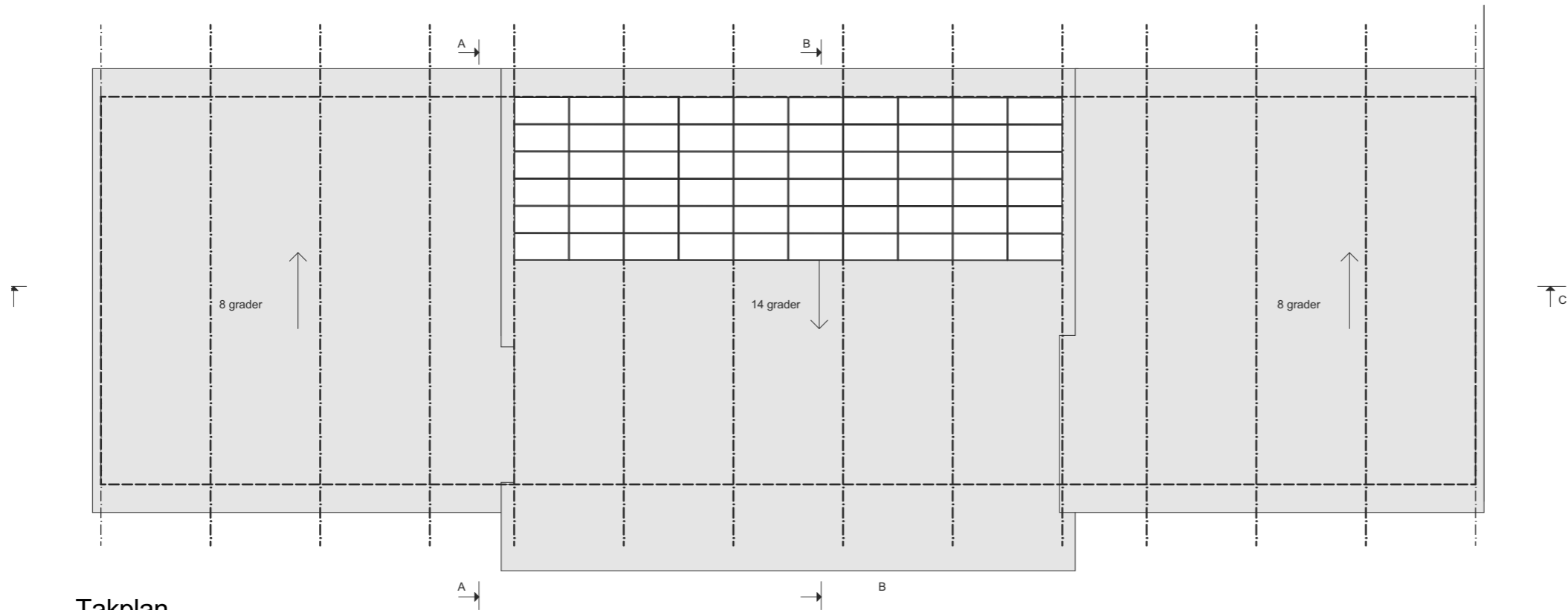
Plan 1, Entréplan
1:200

AREA BTA 674,8 m²
AREA BRA 618,0 m²

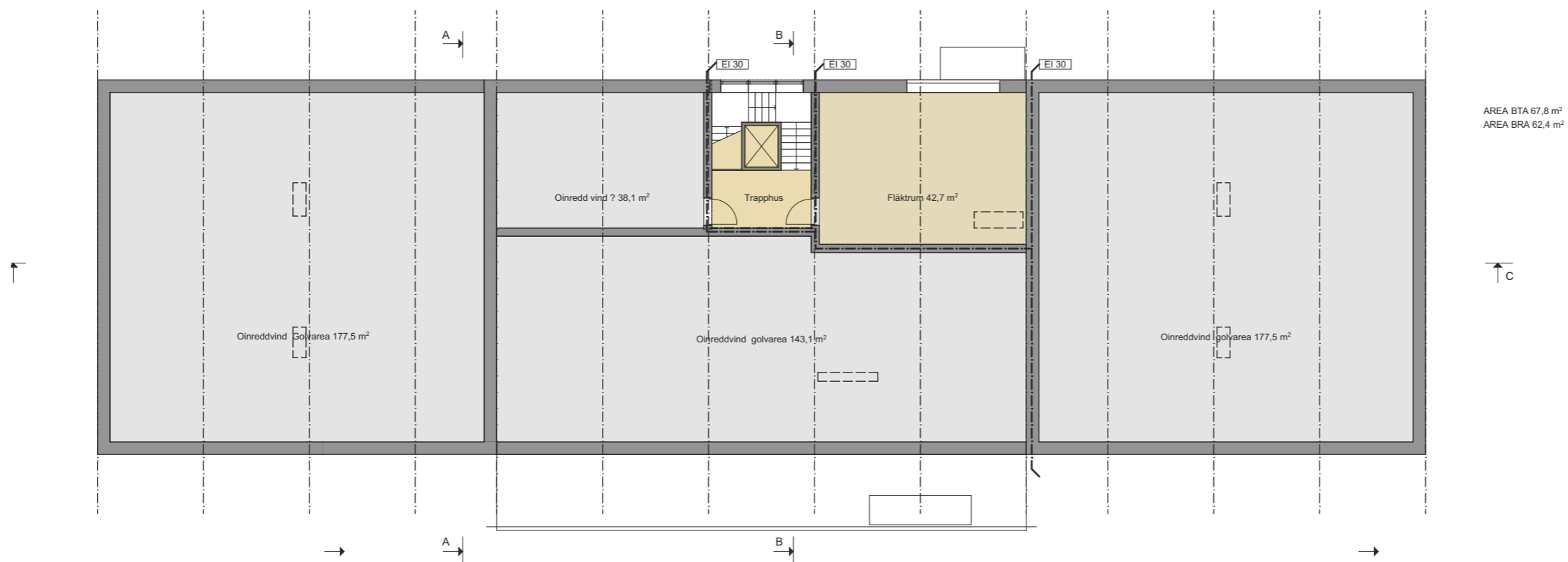
KOMPLEMENTBYGGNADER

	BTA
SOP	20
FRD 1	20
FRD 2	20
Summa	60

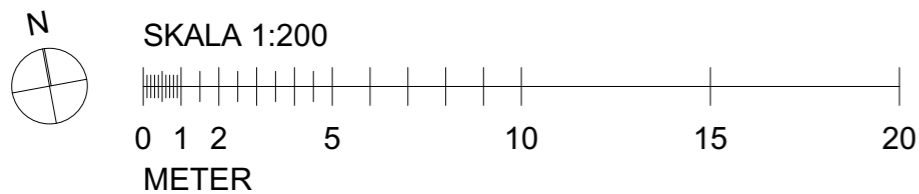


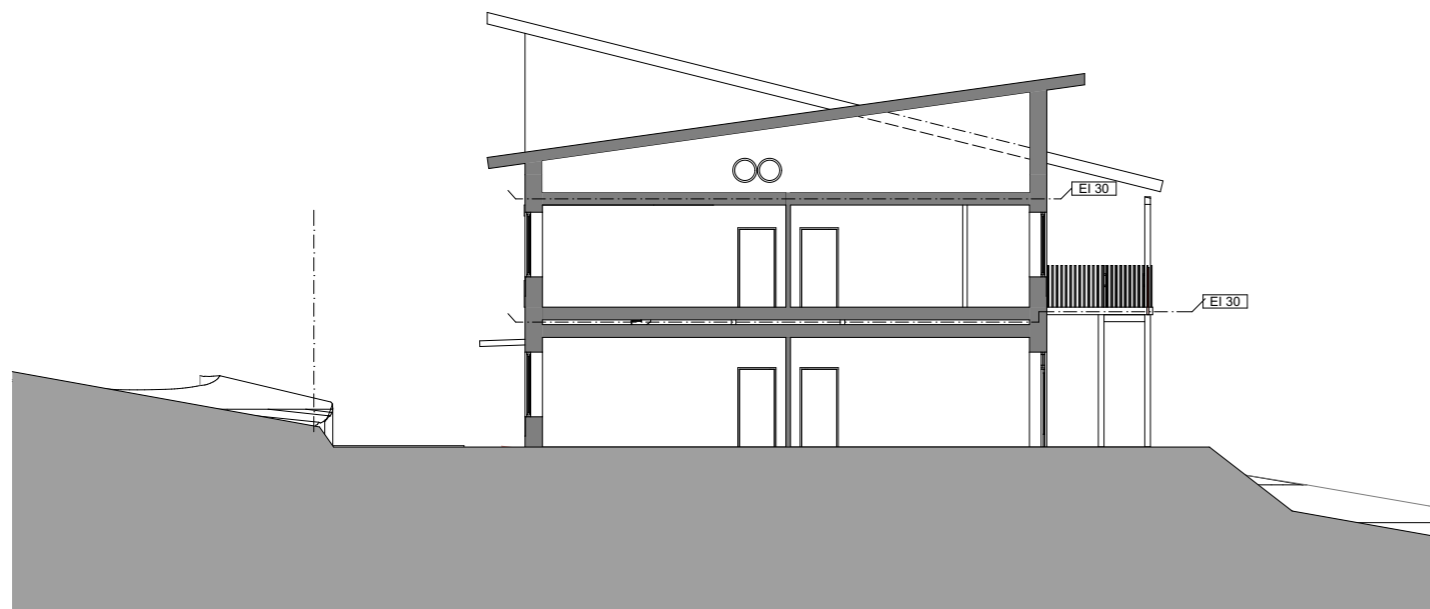


Takplan
1:200

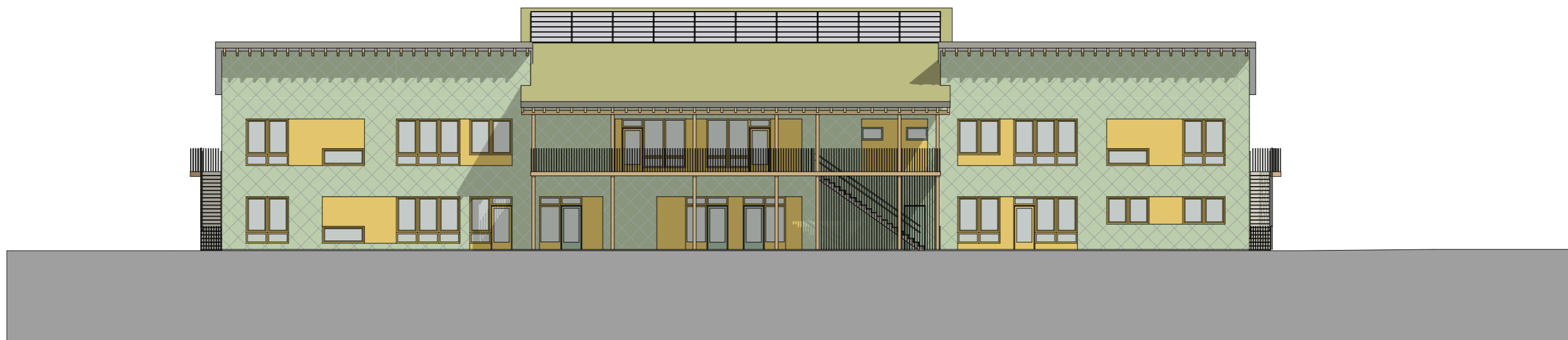


Plan 3, Vind
1:200



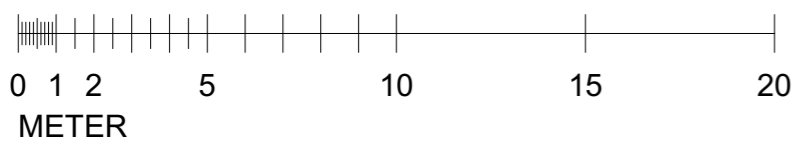


Sektion A-A
1:200



Fasad A1 mot söder
1:200

SKALA 1:200





Fasad A2 mot väster
1:200



Fasad A4 mot öster
1:200



Fasad A3 mot norr
1:200

SKALA 1:200

